



JMG

MC 580

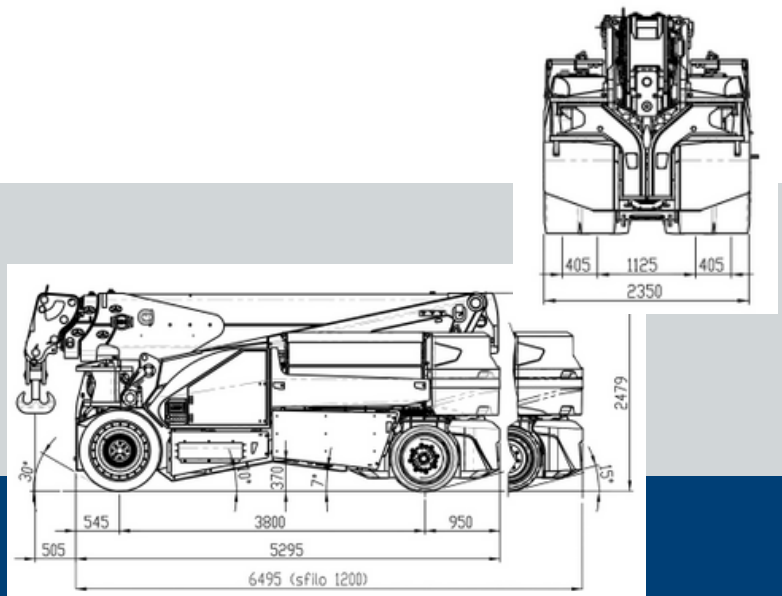
Innovative Lifting with the JMG Crane MC 580

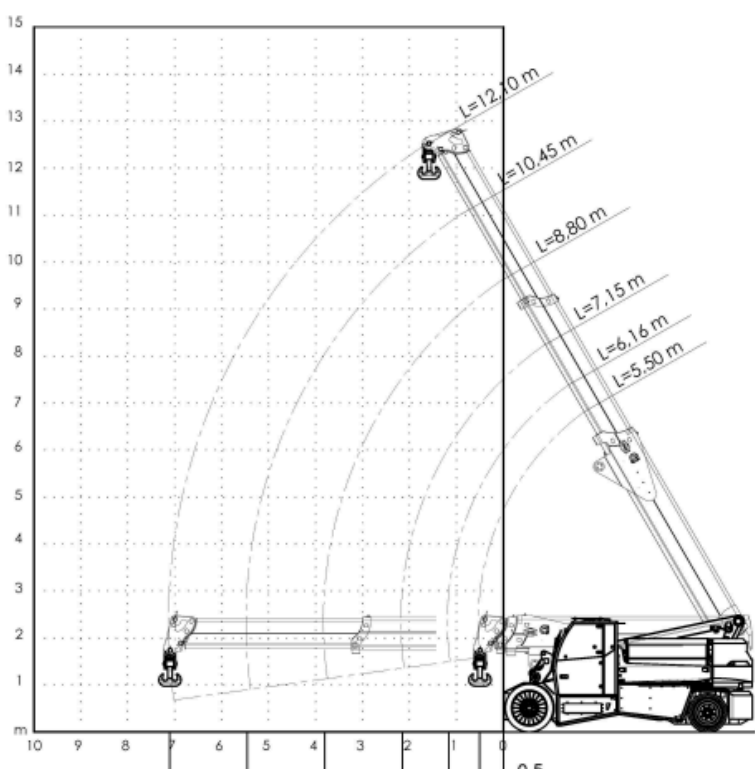
The JMG Crane MC 580 is engineered for superior performance and precision in heavy lifting tasks. With a robust lifting capacity of up to 58,000 kg, the MC 580 ensures efficiency and reliability in various industrial applications. Its advanced design and user-friendly controls make it an ideal choice for operations that demand both power and accuracy. The MC 580 is equipped with special non-marking tires, making it perfect for indoor use without leaving any marks. The MC 580's versatility allows it to tackle a wide range of lifting challenges with ease. Experience unmatched lifting capabilities and exceptional operational flexibility with the JMG Crane MC 580.

- Weight of the machine 24.000kg
- 12.000kg counterweight

Expandable with:

- Hook
- Hydraulic winch
- Hydraulic jip
- Fork attachment





Commitment to Green Innovation

At Gerritsen Group, we prioritize sustainability and eco-friendly solutions. The JMG Crane MC 580 is part of our green initiative, featuring an electric power system that reduces carbon emissions and minimizes environmental impact. By choosing the JMG Crane MC 580, you are supporting a cleaner, greener future without compromising on performance.

Join us in our commitment to green innovation and make a positive impact on the environment with the JMG Crane MC 580. Reduce your carbon footprint and enhance your operations with our sustainable lifting solutions.



More information: sales@gerritsengroup.com