

ORMIG

16 TME

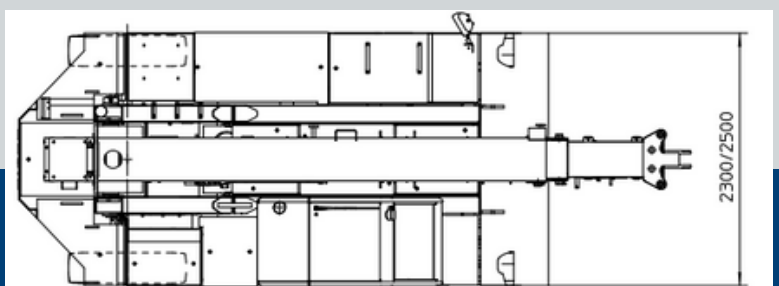
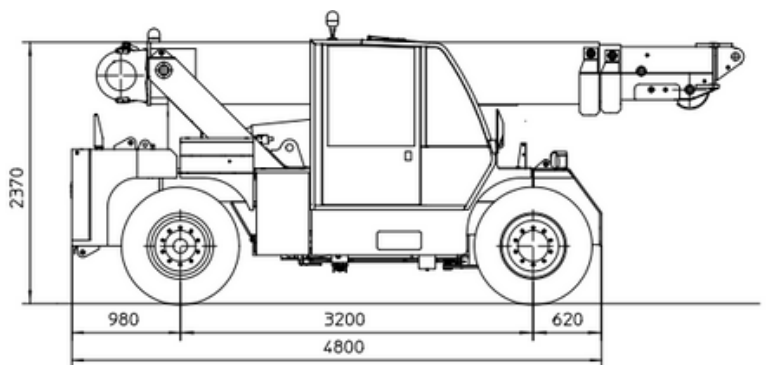
Ormig 16TME: Precision Lifting in a Compact Design

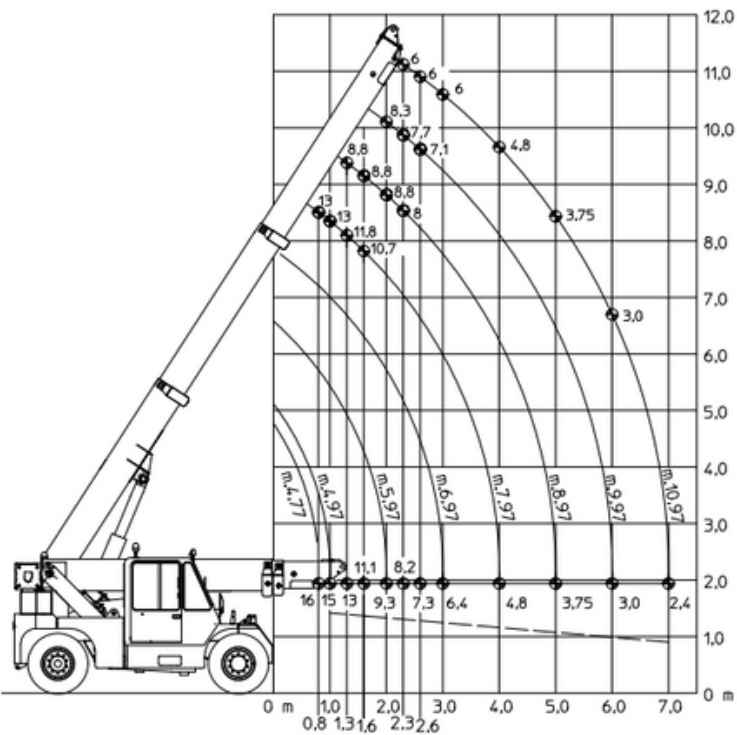
The Ormig 16TME is a versatile and compact pick and carry crane, designed for precise lifting tasks in confined spaces. With a lifting capacity of 16 tons, the 16TME combines power and maneuverability, making it an ideal choice for a wide range of applications.

Its innovative design allows for easy operation and efficient performance, ensuring that you can handle even the most challenging lifting tasks with ease. The Ormig 16TME is equipped with advanced safety features and user-friendly controls, providing both reliability and convenience for your operations.

Expandable with:

- Hook
- Manual jip
- Hydraulic jip
- Winch





Commitment to Green Innovation

At Gerritsen Group, we prioritize sustainability and eco-friendly solutions. The Ormig 16TME is part of our green initiative, featuring an electric power system that reduces carbon emissions and minimizes environmental impact. By choosing the Ormig 16TME, you are supporting a cleaner, greener future without compromising on performance.

Join us in our commitment to green innovation and make a positive impact on the environment with the Ormig 16TME. Reduce your carbon footprint and enhance your operations with our sustainable lifting solutions.

